

Stats at Glance:



Literacy Rate 73.11%



Sex Ratio 1000:875



Population Density
11246 persons/sq km



Nakul Arun
UMG18012
B.Com (Marketing)
43 Months

Water Supply



- The main source of water for Agra is the River Yamuna.
- The water supply is 150 to 200 lpcd.
- The demand is approximately 160 lpcd.
- 85% of Agra is covered by a water network.

Sewerage & Storm Water Management



- Only 17% of the city is covered by the sewerage system, which is underground.
- There are 25 major sewerage zones in the city.
- Spread across 1400 hectares.
- There are 2 water treatment plants in Agra presently – Jeono Mandi and Sikandara.
- Wastewater generated daily is 153 mld, and present capacity of treatment plants stands at 90.25 mld.

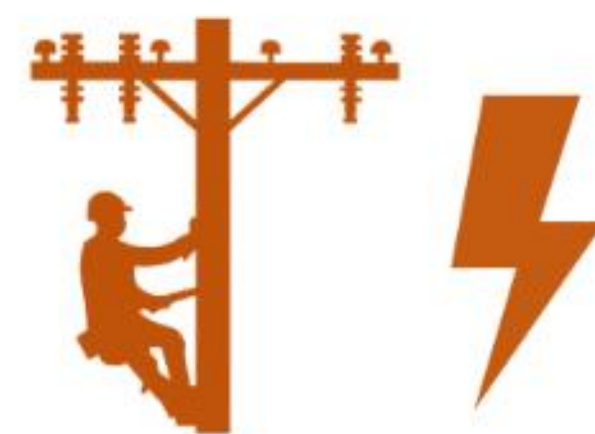
Solid Waste Management



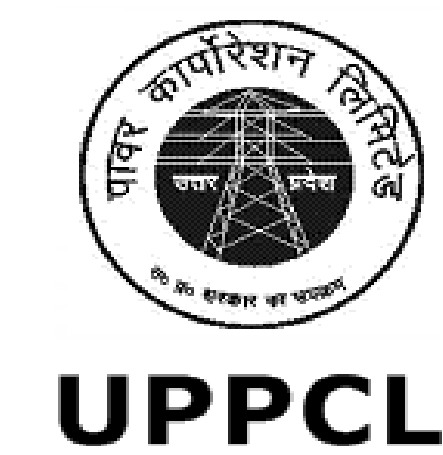
- The daily waste generated is 628 million tonnes (average waste generated is 492 grams per capita per day).
- The main sources of waste generation - houses, hotels and restaurants, markets and hospitals.
- Petha industry units generate about 36 million tons of waste per day.
- 561 temporary storage points for collection of solid waste

Agra, the City of Wonders ???

Power



- Uttar Pradesh Power Corporation Ltd. (UPPCL) was in charge of distribution of power.
- Distribution of electricity is handed over to Torrent Power.
- Slow shift towards solar and rooftop systems.



Public Transport



- Total length of roads is 1724 kms.
- Around 950 buses ply in Agra on a daily basis.
- More than 3/4 of the people use 2-wheelers to commute in the city, followed by cars, autos and bus.
- Public transport share is 4%
- Good regional connectivity to Delhi, Jaipur and other northern cities.

Health Care & Education



- Health Care:
- 127 private hospitals
 - 101 government hospitals
- Education:
- 35 schools in Agra
 - 15 colleges (affiliated to 2 universities)

Municipal Service Delivery : Agra

Agra is situated in the northern state of Uttar Pradesh, on the banks of River Yamuna. The Municipal Area of Agra is 141 sq km., while the Agra District area is spread across 4027 sq km. As per Census 2011, the population of Agra was 15.85 lakh. The annual population growth rate is 2.7%, and the decadal growth rate is approximately 24%. The sex ratio is 875 females per 1000 males.

The main source of water for Agra is the River Yamuna. The minimum water supply is 150 to 200 litres per capita per day, and the demand is approximately 160 litres a day (per capita). 85% of Agra is covered by a water network.

Agra Jal Sansthan (AJS) is in charge of operation and maintenance, and revenue collection in supplying water, while all capital works related to water supply and sanitation are undertaken by Agra Jal Nigam (AJN). The two agencies monitoring water quality in Agra are the National Centre for Rural Development (NRC) and the AJS. The Uttar Pradesh Jal Nigam (UPJN) looks after the planning and design, and implementation of water supply. The District Urban Development Agency (DUDA) creates the urban infrastructure for water supply.

The sewerage system is maintained by the Agra Jal Sansthan. Only 17% of the city is covered by the sewerage system. There are 25 major sewerage zones in the. The sewerage system present here is an underground system and is spread across 1400 hectares.

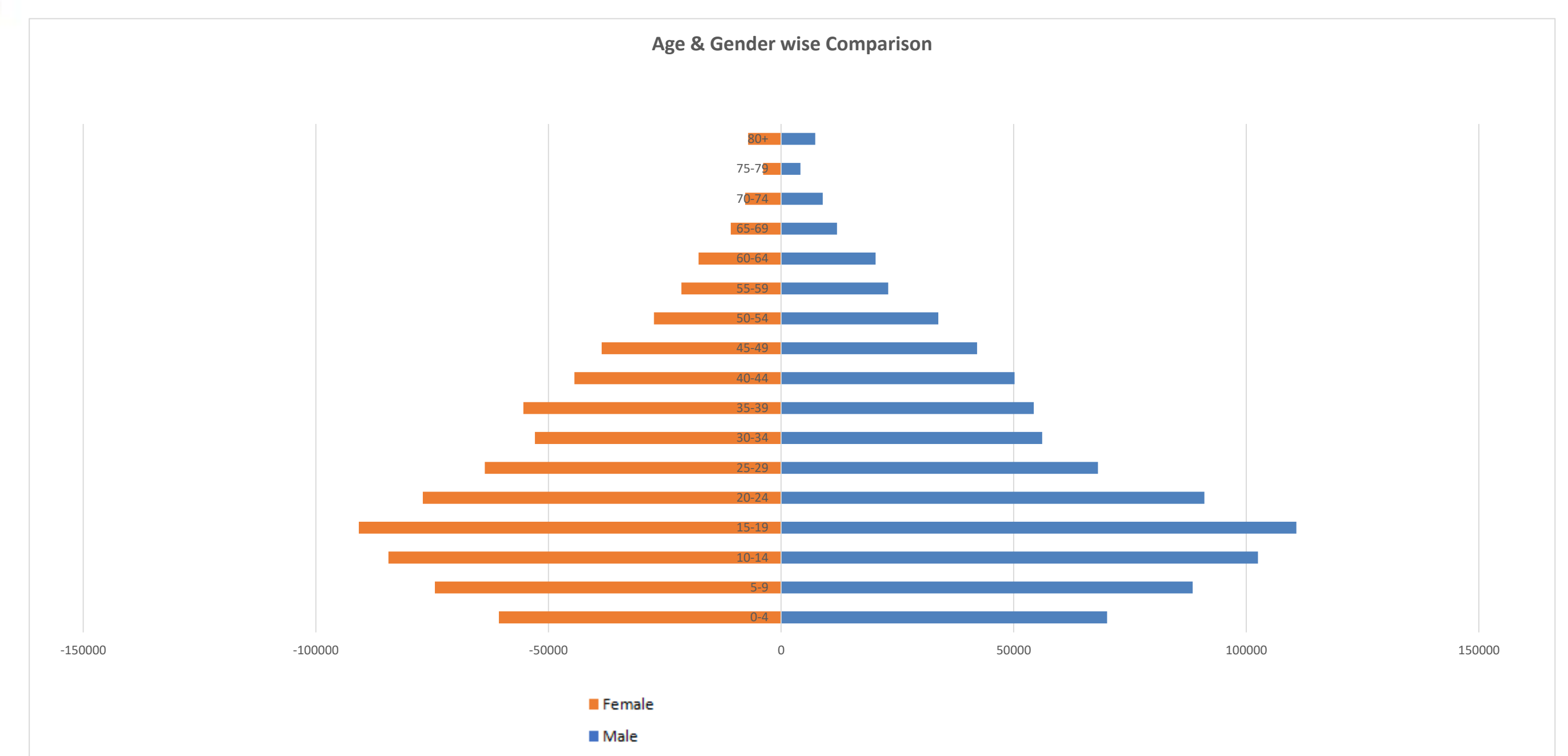
The daily waste generated is 628 million tonnes average waste generated is approximately 492 grams per capita per day. The main sources of waste generation are houses, hotels & restaurants, markets, hospitals and the Petha industry. Agra's Municipal Corporation - Agra Nagar Nigam (ANN) looks after the management of solid waste with respect to its planning, implementation, maintenance and operations.

Uttar Pradesh Power Corporation Ltd. (UPPCL) was in charge of distribution of power. In a major move towards power reforms and cutting the massive distribution losses in the state, the UPPCL handed over the distribution of electricity in Agra to Torrent Power. ANN carries on work related to power supply in the Corporation area. Work in the state is being carried out towards grid connected Solar Power Generation and rooftop power generation.

With respect to transport, various stakeholders are the Agra Nagar Nigam (ANN), Agra Development Authority (ADA), Regional Transport Authority, Uttar Pradesh Tourism, Uttar Pradesh State Road Transport Corporation (UPSRTC), traffic police, NGOs, Public Works Department (PWD) and the Railways.

References:

1. Agra Master Plan 2021, Agra Development Authority
2. En.wikipedia.org.. Agra. [online] Available at: <https://en.wikipedia.org/wiki/Agra>
3. City Development Plan, Agra (JNNURM Report – Aug 2006)
4. SFD Promotion Initiative Report, CSE
5. Water & Waste City Profile
6. Maps of India - <https://www.mapsofindia.com/agra/agra-colleges.html>
7. Comprehensive Mobility Plan (Agra), Urban Mass Transit Company Ltd.
8. Economic Times
9. Uttar Pradesh New & Renewable Energy Development Agency (UPNEDA) – upneda.org.in/AboutUs.aspx



Age-Sex Pyramid