

Stats at Glance:



Literacy Rate 91.30%



Sex Ratio 1000:997



Population Density 8815 Person per Sq. KM



RITESH MOHANTY
UMG18023
B.Tech (Civil Engineering)
Acharya Brothers Construction Pvt Ltd
(15 Months)

Water Supply



- Main source of water is from siruvani and pilloor river drawing 152 MLD and 87 MLD respectively.
- The agencies involved in creation of water supply infrastructure in city is Tamilnadu Water Supply and Drainage Board and the maintenance is the sole responsibility of Coimbatore City Municipal Corporation.
- 90% of households have network coverage, 90% slums have network coverage, per capita supply is 135 lpcd . The extent of **Non Revenue Water** is 20%.

Sewerage & Storm Water Management



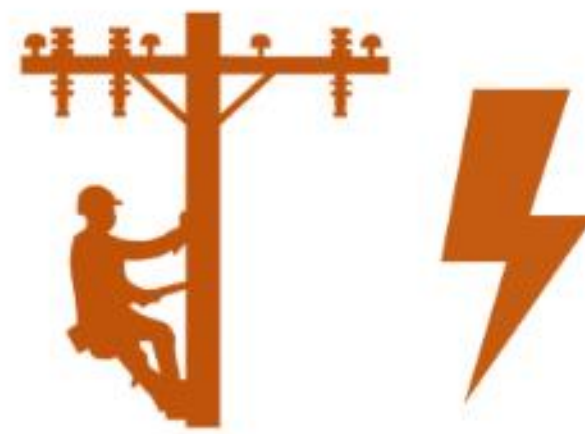
- The current sewerage system covers 23.10 sq.km. 3 zones which collectively discharge 36.04 MLD of sewage which is carried by 162kms of sewer line.
- The corporation maintains 585.22kms of storm water drainage in the city.
- The drain are primarily open with concrete surfacing running along major roads.
- There are total of 10.70km kutcha drains, 561.22 pucca drains and 13.10 km pucca closed drain.

Solid Waste Management



- The city generates 601 tons per day of solid waste from households, hotels, restaurants, industries, hospitals, market places and slums.
- The current scenario indicates source segregation is 10%, house to house collection is 20%, daily sweeping and mopping is 70% and the overall collection performance is 91%

COIMBATORE – THE UNTAGLED NODES



Power

- 98.32% of households have access to electricity.
- Power consumption and operation & maintenance related to street lighting is undertaken under the purview of CCMC



Public Transport

- The municipal corporation major works consists up gradation of existing roads to bituminous and cement concrete roads which will be processed in phase manner.
- The traffic and transportation sector are vital to ensure connectivity and mobility. Gearing of the bus route, construction of flyovers, pedestrian subways are priority work.



Health Care & Education

- The CCMC maintains 16 dispensaries, 2 maternity homes and 20 urban health posts.
- Out of the 98 schools maintained by the Corporation, 60 are Elementary schools, 13 Higher Elementary or Middle schools, 11 Higher Secondary schools, and one special school for the deaf and dumb.
- The Corporation maintains 4 career guidance clubs to provide career guidance to students.

Municipal Service Delivery : Coimbatore

Coimbatore also famous as “Manchester of South India” because of its cotton production and textile industries is a major hub of in southern India. It is located in the state of Tamil Nadu. The total population is 10,50,721. The male and female break up is 5, 26,163 and 5, 24,558 respectively. The population growth is steady and continuous. The literacy rate of city is 91.30%, the total male literacy is 94.46%, and the total female literacy is 88.15%. The sex ratio is 997 females per 1000 males. The city is governed by only one ULB i.e. Coimbatore City Municipal Corporation (CCMC).

The main source of water is from siruvani and pilloor river drawing 152 MLD and 87 MLD respectively. The agencies involved in creation of water supply infrastructure in city is Tamil Nadu Water Supply and Drainage Board (TWAD) and the maintenance is the sole responsibility of Coimbatore City Municipal Corporation. Currently 90% of households have network coverage, 90% slums have network coverage, per capita supply is 135 lpcd. The extent of Non-Revenue Water is 20%. The city is divided into 3 zones which collectively discharge 36.04 MLD of sewage which is carried by 162kms of sewer line. Total population coverage for sewage collection is 54%. The corporation maintains 585.22kms of storm water drainage in the city. The drains are primarily open with concrete surfacing running along major roads. There is a total of 10.70km kutcha drains, 561.22 pucca drains and 13.10 km pucca closed drain.

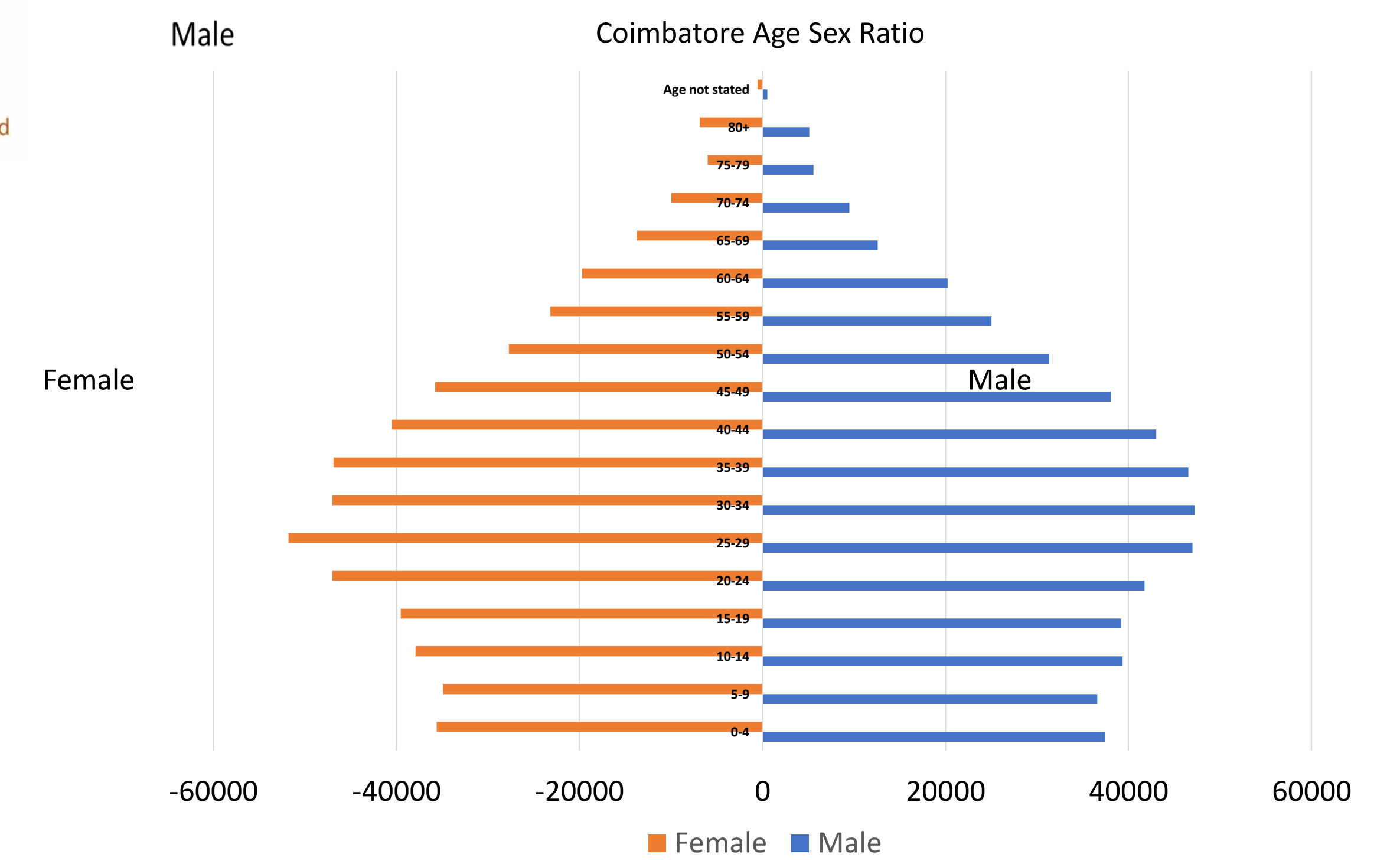
The city generates 601 tons per day of solid waste from households, hotels, restaurants, industries, hospitals, market places and slums. The current scenario indicates source segregation is 10%, house to house collection is 20%, daily sweeping and mopping is 70% and the overall collection performance is 91%. 98.32% of households have access to electricity. Power consumption and operation & maintenance related to street lighting is undertaken under the purview of CCMC

The CCMC maintains 16 dispensaries, 2 maternity homes and 20 urban health posts. Coimbatore houses government education institutions along with aided and private institutions. It also houses some of the best engineering colleges in Tamil Nadu like the Coimbatore Institute of Technology, P.S.G College, etc. The literacy rate in the town is 80 percent. The Corporation maintains 98 schools with a total teaching strength of 1318 and student strength of 39,360. Out of the 98 schools maintained by the Corporation, 60 are Elementary schools, 13 Higher Elementary or Middle schools, 11 Higher Secondary schools, and one special school for the deaf and dumb. The Corporation maintains 4 career guidance clubs to provide career guidance to students.



References:

1. Coimbatore city municipal Corporation
2. Tamilnadu water supply and drainage board (TWAD)
3. Coimbatore city municipal Corporation



Age-Sex Pyramid

