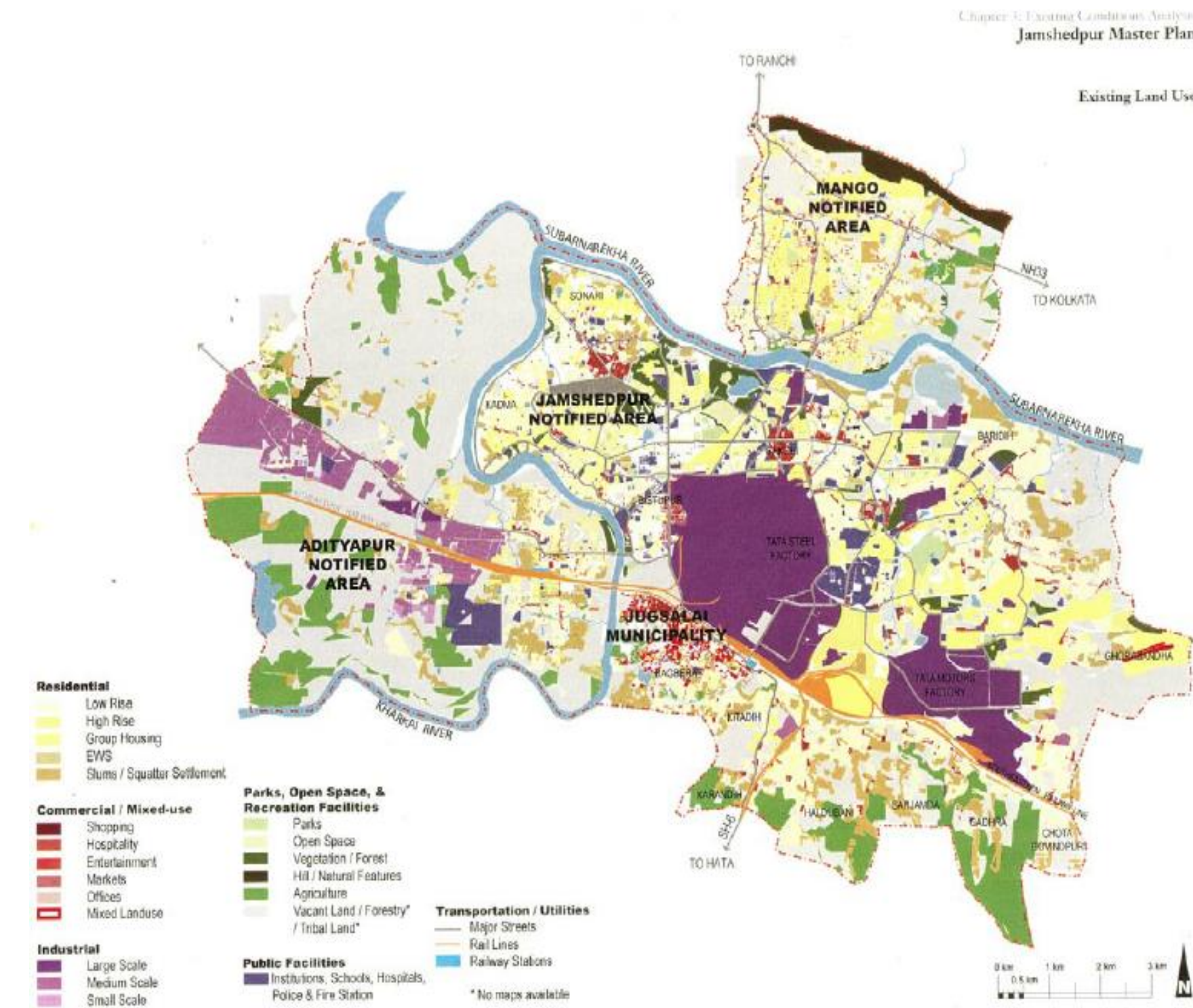


**Jamshedpur,
Jharkhand**



Stats at Glance:

Literacy Rate
86.91%

Sex Ratio
1000: 883

Population Density
6000 persons/ sq km

Water Supply



JUSCO is the one handling the water supply in Jamshedpur. Only 335 connection are metered. Water supply is for only 6 hours a day . The water supply is from Subarnarekha and Kharkai dams. The capacity of Subarnarekha is 25000ml and 22.7 MLD is extracted and from Kharkai 34000ml and 70-75 MG is extracted

Sewerage & Storm Water Management



The sewerage disposal in the city is taken care by the Jamshedpur Notified Area Committee . The projected water requirement for sewerage disposal is 109.3. The projected Sewerage generation is 87.8. The city has nearly 40 big drains out of which 15 drains are the effluents by the companies

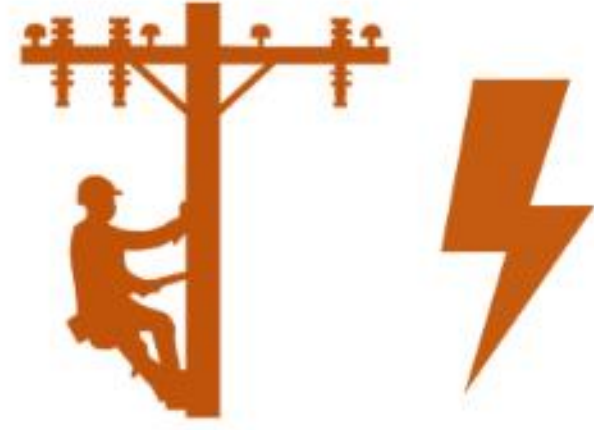
Solid Waste Management



JUSCO handles the solid waste in the city. The cost of collection of 1 ton Garbage is Rs 95.5. The Garbage generated is 2250 gms per HH. There are three different ways of collecting solid waste, Door to door collection Block collection and Curb side collection

JAMSHEDPUR- A ZERO SEWORAGE DISCHARGE CITY

Power



Jamshedpur utilities and services company takes care of the electricity generation. The Present total installed power capacity is 2590 MW. In view of future requirements NTPC, DVC and State PSUs setting up different plants with total capacity of 4736 MW.

Public Transport



The transportation system is mainly focused by the Jamshedpur notified area committee. The main functions that the JNAC focuses on is the registration of the vehicle, insurance of learner and driver license, collection of Road tax, Renewal of Road tax.

Health Care & Education



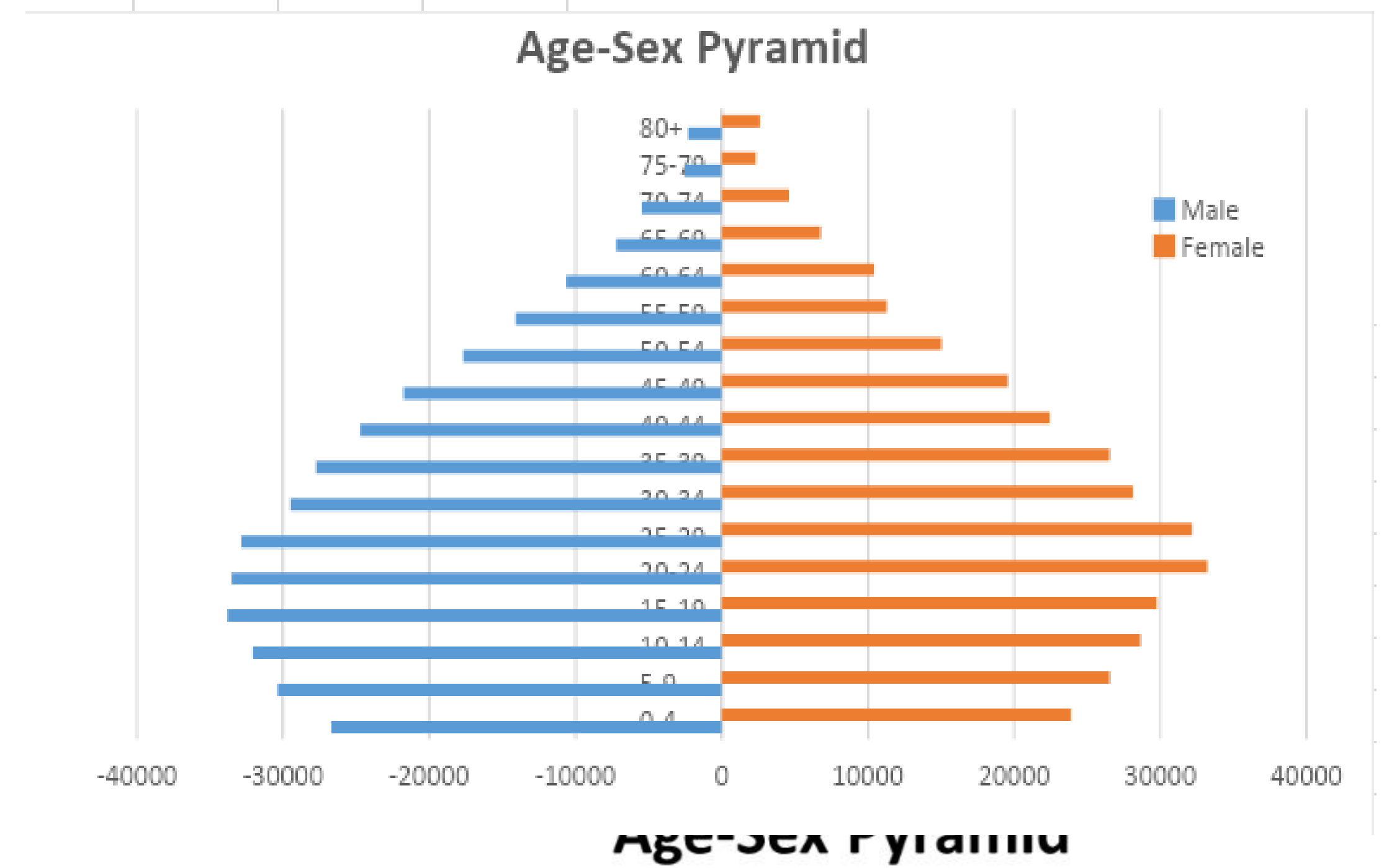
Jamshedpur notified committee area . East Singhbhum is one of the major district in terms of accessibility of health services as people from surrounding districts visit to avail medical facilities, but these facilities are limited to the affluent class . Currently 9 PHCs, 16 APHCs and 242 HSCs are functioning in the district.houses

Municipal Service Delivery : JAMSHEDPUR

Jamshedpur is the city which is known for the unit of iron and steel. Earlier, Jamshedpur was known as Sakchi which later changed to Jamshedpur. The regional connectivity being specific , the mass rapid transit system, to bypass the raw material and movements of products from Tata motors to Tata steel. There is a need to revitalize existing rail links between industries to facilitate the ‘traffic-free’ exchange of goods/raw material and to minimize the current dependence on moving freight on congested streets. The city population is 677,725Jamshedpur utilities and service company (JUSCO) ,it mainly focuses on the health, education, social welfare and transportation of the city. JUSCO is the one which has been handling the water supply in Jamshedpur. Supplies water to Jamshedpur with a population of 615,500. Only 335 connections metered, rest pay flat rate average bill Rs 81 per house connection. Water supply is for 6 hours a day only, restricted to 74% of the population in its area of responsibility. No water supply for urban poor - supplied from 552 public stand posts. Outside the network, borewells with hand pumps provide water Water from Sitarampur Dam is likewise accessible as a substitute wellspring of supply where dilute is drawn from the waterways amid the time of low rain fall. To understand the different aspect of Solid Waste, it is taken up by JUSCO. Dividing the solid waste into various categories, the agricultural waste , industrial waste, commercial and institutional waste. Mainly four steps are involved in solid waste management, first is the source collection (door to door waste collection system, secondly it is the primary storage and transportation, then it is the secondary transportation and lastly it is the disposal in which it includes the composting, waste to energy, land filling. Sewerage system would treat 100% of sewage generated and considering the industrial nature of employment in the JUA and the large number of floating population, clean, affordable sanitation facilities at public places would be made. An excellent drainage system for effective drainage of rainwater even during heavy downpours. Taking the city of Jamshedpur into consideration, The Jamshedpur notified Area committee and the Jamshedpur utilities and services company are the multiple authorities in the city. The utilities like sewer and drainage and storm water and surface drain are taken care by the Jamshedpur notified Area Committee. Utilities like Water supply lines are taken care by the Jamshedpur utilities and services company. Electricity cables and Telecommunication cables , the initiatives for these are taken care by the Jharkhand Bijli Vitran Nigam Limited. These utilities are authorized by the JUIDCO which is the urban infrastructure development company limited. Refurbishment of drains of the existing drainage system where necessary. The greening and beautification of reserved corridors along the main natural drains. The city has nearly 40 big drains out of which 15 drains have effluents of companies passing through it. There are nearly 150 small drains in different localities of the city. The sewerage and drainage system is focused by the Jamshedpur Notified Area Committee.

References:

- 1.censusindia.gov.in
2. Maps of India
- 3.Jamshedpur.nic.in/jusco
- 4.Jharkhand.gov.in/ULB/Jamshedpur
- 5.Economictimes.indiatimes



PRATIKA PRATAP
UMG18018
BACHELORS IN BUSINESS ADMINISTRATION

