

Stats at Glance:

Literacy Rate
85.77%

Sex Ratio
1000:850

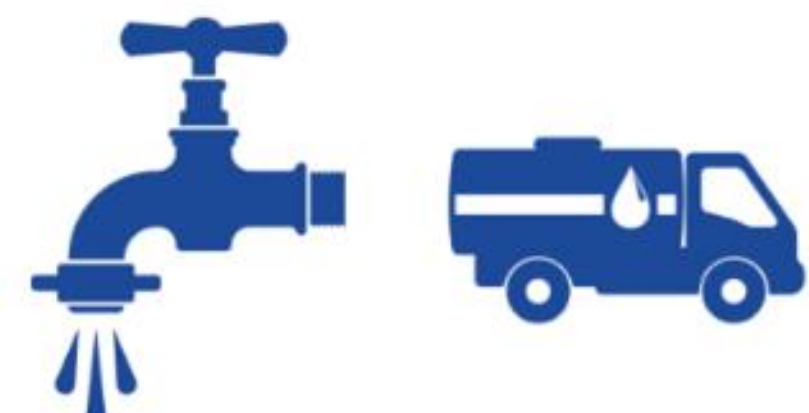
Population Density
10158 persons/sq.km.



Subhra Das
UMG18032
Computer Science & Engineering
Infosys Limited (2.5 years)



Water Supply



PWSSB looks after Execution of original works of water supply and MCL looks after O&M.

- Nearest river Sutlej is located 15kms from city
- 80.93% of households have access to tap water
- 92.58% have toilet facility within premises
- The city receives 12hours of water supply per day with Per capita availability of potable water is >220 lpcd
- The city is divided into "Declared area" and "undeclared area" with NO supply of water to the latter

Sewerage & Storm Water Management



PWSSB (Public Water Supply & Sewerage Board) & MCL(Municipal Corporation Ludhiana)

- Almost 67% of the area under MCL has underground sewerage connection which accounts for 89.47% households having waste water outlets
- 432MLD of waste is generated in the city
- Jamalpur,Bhattian & Balloke have STP's with total capacity of 311 MLD
- Only 11% city is covered with storm water sewer

Solid Waste Management

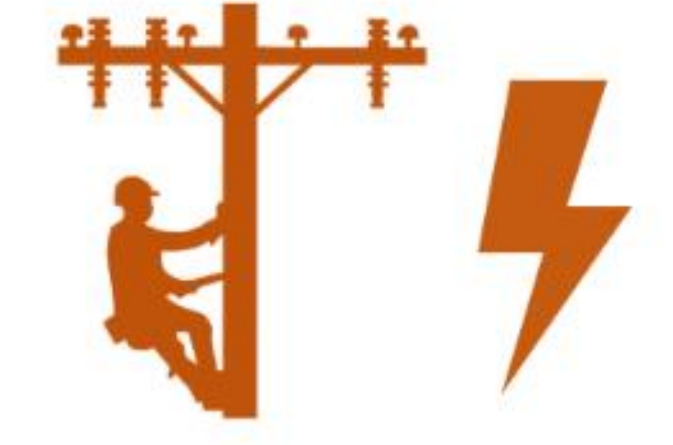


MCL looks after the Door-to-Door solid waste collection

- Municipal Solid Waste(MSW) generates 56.31% of waste
- Hospital Solid Waste(HSW) generate 23.95% waste
- Industrial Solid Waste(ISW) generate 19.74% waste
- The city daily generates about 850 MT of garbage. Per capita waste generated per day is 535 grams
- Total 269 waste collection points are there across all 4 Zones
- Total 69 scheduled vehicles collect waste to the landfills

Ludhiana: "City of Administrative Excellency"

Power



Punjab State Electricity Board (PSEB) is involved in the generation of power

- Bio-gas is another source of generating power in the city funded by GoI, State Government & PEDA
- Bio-gas power project is Synchronized with PSEB grid and has 1 MW capacity
- The project design can handle 235 tons of Cow-dung to generate 0.965 MW electrical Energy.
- Technology support from Enkee Austria

Public Transport



Started by **Punjab Roadways (GoP)** which shifted to **MCL** in 1977 with 36 buses and passenger capacity of 52 persons

- Present road network is spread over 12.72 sq.km.
- Other mode of public transport is Auto Rickshaw, Cycle Rickshaws and Taxis
- Total 3060 buses(1497 private & 1563 government) ply as Inter-City public transport
- Freight Transportation is dependent on trucks. The depot is located at Samrala Chowk with 3000 buses moving daily

Health Care & Education



Planning, Design and Implementation of Health & Education services is done by Government of Punjab (GoP) and O&M is jointly looked upon by GoP and MCL.

- Total of 28 schools & 5 colleges are there for 1 lakh population which accounts for 81.58% of the city
- Out of 209 identified slum, 55 of them have education facility
- Around 97 slums have no medical facility
- Number of hospitals are 0.06 for 100000 population

ਪੰਜਾਬ ਪ੍ਰਦੂਸ਼ਣ ਕੰਟਰੋਲ ਬੋਰਡ
Punjab Pollution Control Board

Municipal Service Delivery : LUDHIANA

Ludhiana city lies within the Ludhiana district in the state of Punjab, and is the largest city in the province in terms of area and population. Official sources suggest that the city is spread over 159.37 sq. km and has a population of approximately 1.6 million people [1]. The north Indian city is settled along the banks of Sutlej River and hosts the largest agricultural university in Asia. The city is also a well-developed manufacturing and commercial hub in northern India, as well as being an important pilgrimage centre for Sikhs.

- Civic administration is mainly under the management and control of MCL. Apart from MCL other institutions are involved in the overall management of the city development, which are also established under the law. There are 5 organizations established under law to provide certain Urban functions like:
1. MCL (Municipal Corporation Ludhiana) - Creation of basic amenities and their maintenance.
 2. PWSSB (Punjab Water Supply and Sewerage Board) - Execution of original works of water supply sewerage & treatment plants for the MCL.
 3. PUDA (Punjab Urban Development Authority) - Development and selling developed plots in areas after acquiring them.
 4. PPCB (Punjab Pollution Control Board Ludhiana) - Control on industrial pollution and municipal bodies for MSW.
 5. IT Ludhiana - Development of notified areas by Improvement Trust, carving out of plots and selling

Organizational structure of the Municipal Corporation Ludhiana(MCL) is divided into four zones viz. Zone A, Zone B, Zone C & Zone D each headed by a Zonal Commissioner under the overall control of the commissioner MCL. Joint Commissioners/ Additional Commissioners are also attached to assist the Commissioner for controlling and monitoring of specific duties of different branches assigned to them. There are four zonal offices situated in different parts of the city. Zonal Commissioners and their respective staff members sit for day to day removal of grievances pertaining to water supply, sewerage, sanitation, Sanctioning of building plans and other works like issuance of property certificates and tax deposits including the water charges. The city Municipal corporation has a total population of 1618879[2] where share of ULB area in district (%) is 4.24 [3].

Under the purview of urban development, organizations like PWSSB, MCL and Punjab Roadways are involved in Urban Infrastructures. Water Supply, Sewerage and Storm water drainage sector is handled by PWSSB (Punjab Water Supply and Sewerage Board)[4]. The Municipal Corporation has 89.47% of household waste water outlet connected to drainage [1] where there is underground sewerage and door-to-door solid waste collection system [1]. Solid Waste Management Systems, Municipal Roads and Infrastructure are looked after by MCL (Municipal Corporation Ludhiana).Urban transport in Ludhiana is looked after by Punjab Roadways. There are few private sector organizations involved in providing urban provisions. Water Supply, Sewerage and Storm water drainage sector is handled by MSC's (Mohalla Sudhar Committee). Public Toilets are carried out on contractual basis. Planning and Design , Implementation and Operation & Maintenance for Development plan preparation (Land use Zoning & regulation), Storm water Drainage, SWM, Roads & drains, Street Lighting and Fire Services of Ludhiana is handled by MCL.

References:

1. Vision 2021, Ludhiana City Development Plan, Initiative under Jawaharlal Nehru National Urban Renewable Mission,2007
2. Vision 2021, Ludhiana City Development Plan, Initiative under Jawaharlal Nehru National Urban Renewable Mission,2007, Organizational Structure, viewed on July 2019, <<http://www.indiaenvironmentportal.org.in/files/file/CDP-LUDHIANA.pdf>>
3. Ludhiana Smart City, 2016,City Profile of Round 1 Smart City, Ludhiana, viewed on July 2019,<http://smartcities.gov.in/upload/uploadfiles/files/Punjab_Ludhiana.pdf>
4. Census - 2011 Data Publication, H-Series - Tables on Census Houses, Household Amenities and Assets, viewed on July 2019,<<http://censusindia.gov.in/2011census/hlo/Census-2011-H-Series.html>>
5. District Census Handbook, Punjab, Town Amenities <<http://censusindia.gov.in/2011census/dchb/DCHB.html>>

