

Stats at Glance:



Literacy Rate
90.91%



Sex Ratio
1000:997



Population Density
10540 persons / sq. km.



SABYASACHI KANUNGO
UMG18031

Bachelor of Technology(Metallurgy and Materials Engineering)

Water Supply



Source- River Vaigai
Treatment Plant- 1 (Pannaipatty)
Water Supply Distribution Zones- 12
Total connections- 82,369
• Domestic- 79,611
• Industrial- 172
• Commercial- 2,586
Average supply- 60 lpcd
Payment Structure
• Domestic- Rs 412
• Industrial- Rs 1466
• Commercial- Rs 991

Sewerage & Storm Water Management



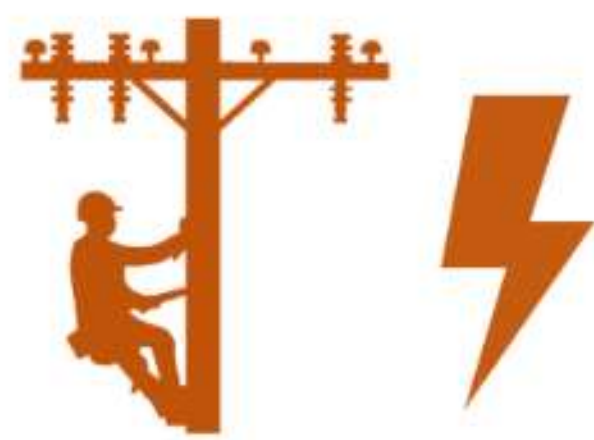
Sewerage Zones- 2
Sewerage system coverage- 42%
Total Connections- 45,613
Sewerage Status-
• Fully Sewered- 43
• Partially Sewered- 16
• Unsewered- 13
Treatment Plants- 2
Total Collection- 61MLD
Storm water drain length- 170km
Coverage- 28%
Types-
• open pucca drain- 143 km
• open kutcha drain- 4 km
• closed pucca drains- 23 km

Solid Waste Management



Collection Zones- 4
Total waste generated-450 MT
Per Capita Generation- 406 gms
Source of waste generation-
• Domestic- 57%
• Commercial- 28%
• Industrial- 15%
Types of waste generated-
• Biodegradable- 64%
• Non-biodegradable- 36%

MADURAI - Time to reorganize the "Athens of the East"



Supply- TANGEDCO
Total consumption- 146 lakh units
Sector wise consumption-
• Domestic- 44 lakh units
• Industrial- 16 lakh units
• Commercial- 76 lakh units
• Public purpose- 10 lakh units
Sources of electricity-
• Thermal Power Stations- 4
• Gas based power plants- 4
Zones for supply of street light- 4
Total number of street lights- 24000
Types of street lights-
• High mast lamps- 10
• Tube lights- 16,012
• Ordinary bulbs- 94

Power



Total length of the road- 615 km
Types of roads-
• National Highways- 4 nos.
• State Highways - 7 nos.
• MDR's- 8 nos.
Types of public transport-
• City buses
• Private buses
• Auto rickshaws
• Cycle rickshaws
Number of buses- 621
Number of bus stands- 6
Number of bus stops- 391
Inter city/state transportation mode
• Railways
• Flights

Public Transport



Number of government hospitals-1
Doctor ratio with population- 1:2400
Bed ratio with population- 4:1000
Private hospitals- 126
Birth rate- 19.3
Death rate- 4.3
Infant mortality rate- 8.7
Literacy rate- 90.91%
Types of education-
• Aided
• Privatized
Total schools- 74 (primary school + middle school +high school)

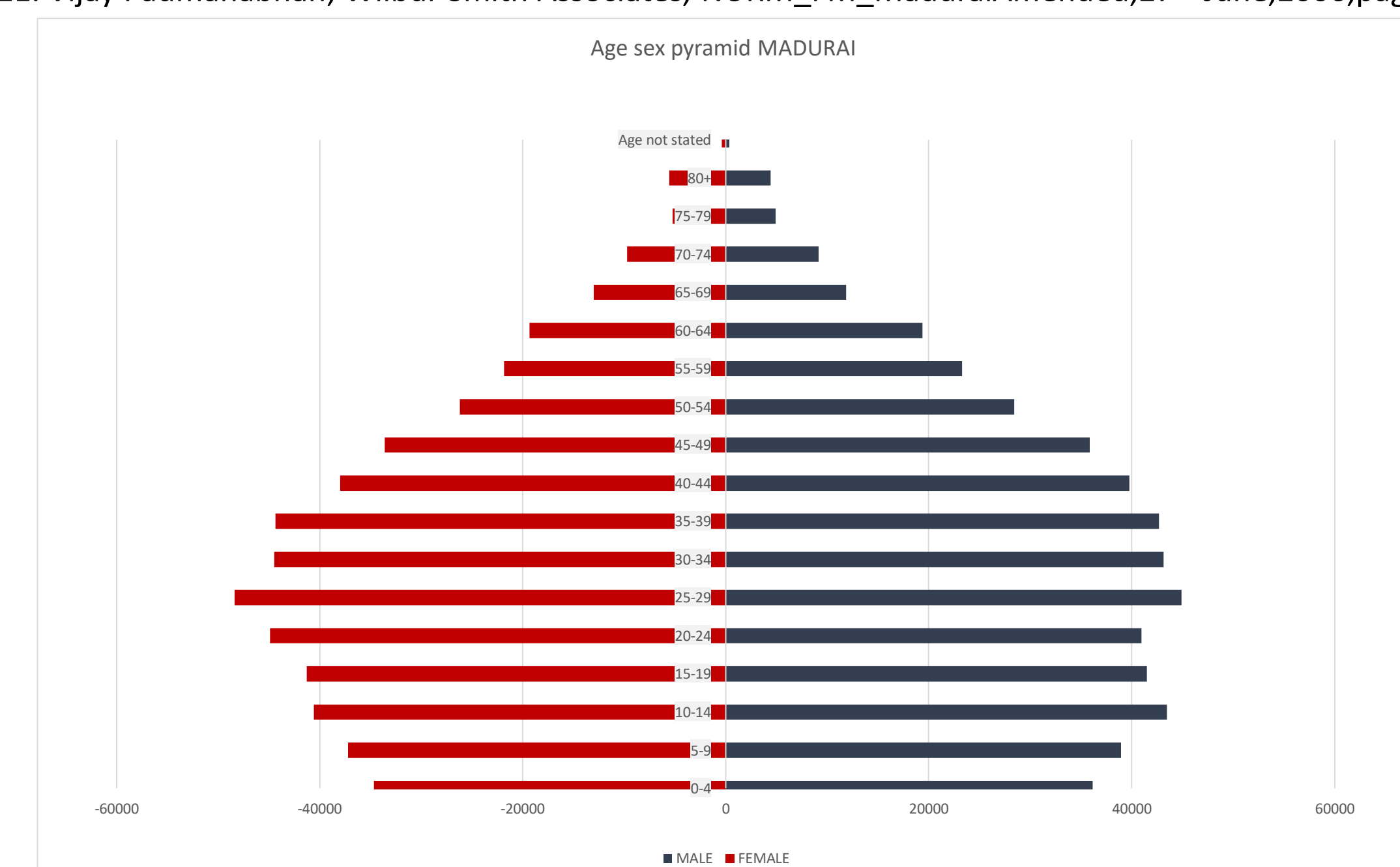
Health Care & Education

Municipal Service Delivery : Madurai

The main source of water supply in the city through various schemes is the Vaigai River. The treatment plant is near Pannaipatty village which is 16 kms away from the Vaigai Dam. It has a capacity of 71.6 MLD. There are total 82,369 connections from which 79,611 are Domestic connections, 2,586 are Commercial connections and 172 are Industrial connection. The average per capita supply of water is 60 lpcd which is below the minimum supply per household. WSSO is responsible for the capacity development of the water supply. The TWAD is responsible for the supply of water in the city. PWD is responsible for construction of tanks and other storage facilities in the city. The sewerage system in Madurai is one of the earliest sewer system in the country. A total of 43 wards are fully sewerred, 16 wards are partially sewerred while remaining 13 are unsewerred. The sewerage system collects 61MLD of sewage at the main pumping station and there are total 2 sewerage treatment facilities. The Corporation has provided with 45,613 sewer connections. CMWSSB, is the implementing ,TWAD looks after the underground drainage facilities. The Municipal Corporation looks after the building of toilets. Madurai is provided with network of storm water drains up to a length of 170 kms, which is only 28 percent of the total road network of the City. The PWD looks after the construction of tanks and HR&CE looks after the maintenance of the tanks. TWAD is the service provider. The PHD looks after the inspection part. Madurai approximately generates 450 MT of waste on a daily basis which accounts to 406 gms per capita of waste generation. Household waste is responsible for the highest generation of waste followed by commercial sector and then the industrial sector. The Public Health department of the Corporation is accountable for the Solid Waste Management in the City. The Municipal Corporation is responsible for the collection transportation and disposal of the solid waste. A total of 615 km of road comes under the Corporation boundary which includes 4 NH's and MDR's and other roads. The municipal corporation is responsible for the construction and maintenance of the roads except for the roads under PWD and Highway Authority. TNEB provides electricity to the various sectors. Total consumption of electricity for the various sectors in the city is 146 lakh units. Around 24,000 street lights have been installed by the corporation in various areas of the city. Madurai corporation installs the lamp posts and the bulbs whereas the TNEB provides the current supply. The total length of pavement under the corporation boundary is around 61 km. The municipal corporation is responsible for the construction of such pavements. The town has both government and private run hospitals and clinics. There are approximately 226 hospitals including major and minor. The public health department of Madurai Corporation looks after the health care system of the city. The literacy rate in the city is 90.91 percent which is higher than the country's average. There are total 74 schools education within the corporation.

References:

1. Access through <https://en.wikipedia.org/wiki/Madurai> on 5th July 2019
2. Access through www.maduraicorporation.co.in on 5th July 2019
3. Vijay Padmanabhan; Wilbur Smith Associates, NURM_FM_MaduraiAmended,27th June,2006,page number-38-46
4. Access through <https://www.twadboard.tn.gov.in/water-quality> on 5th July 2019
5. Vijay Padmanabhan; Wilbur Smith Associates, NURM_FM_MaduraiAmended,27th June,2006,page number-54-58
6. Vijay Padmanabhan; Wilbur Smith Associates, NURM_FM_MaduraiAmended,27th June,2006,page number-54-58
7. Vijay Padmanabhan; Wilbur Smith Associates, NURM_FM_MaduraiAmended,27th June,2006,page number-66-68
8. Vijay Padmanabhan; Wilbur Smith Associates, NURM_FM_MaduraiAmended,27th June,2006,page number- 66-68
9. Vijay Padmanabhan; Wilbur Smith Associates, NURM_FM_MaduraiAmended,27th June,2006,page number-71-72
10. Vijay Padmanabhan; Wilbur Smith Associates, NURM_FM_MaduraiAmended,27th June,2006,page number-73-75
11. Vijay Padmanabhan; Wilbur Smith Associates, NURM_FM_MaduraiAmended,27th June,2006,page number-76-78



Age-Sex Pyramid



Xavier School of Human Settlements
Xavier University Bhubaneswar

